

NORIOTA

GAS GRIDDLES – STANDARD SERIES



NMG18



NMG36



NMG24



NMG48

FEATURES & BENEFITS

- **Robust Stainless Steel Build:** Stainless steel front, bullnose, 7.6 cm (3 in) grease trough, and fully welded splash guard
- **Thick Polished Steel Griddle Plate:** 1.6 cm (5/8 in) or 1.9 cm (3/4 in for NMG48 only) thick polished steel griddle plate with a 48.2 cm (19 in) deep cooking surface
- **High-Efficiency Burners:** Powerful 30,000 BTU “U” shaped burner for each 30.5 cm (12 in) of cooking width
- **Easy Ignition:** Each burner includes an individual standing pilot and control knob for quick and reliable ignition
- **Easy Cleaning:** A removable drip tray simplifies maintenance and keeps the cooking area clean
- **Adjustable Legs:** 10.1 cm–12.7 cm (4 in – 5 in) heavy-duty steel legs with adjustable feet, offers stability and adaptability, ensuring a secure and level setup on any surface
- **Versatile Gas Compatibility:** Ships ready for natural gas use but can be easily converted to liquid propane in the field with included parts

GAS

NMG*N: Natural Gas Field convertible to Liquid Propane with included components 3/4" gas connection

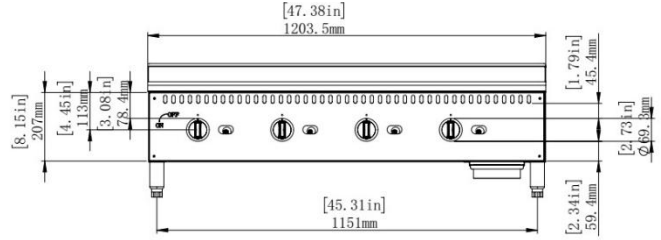
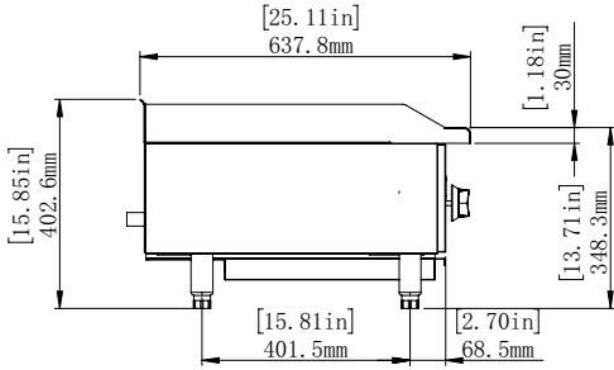
Minimum supply pressure:
4" W.C. for Natural Gas
10" W.C. for Liquid Propane

WARRANTY

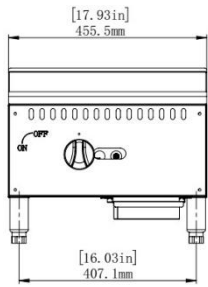
2-year parts & labour

NORIOTA

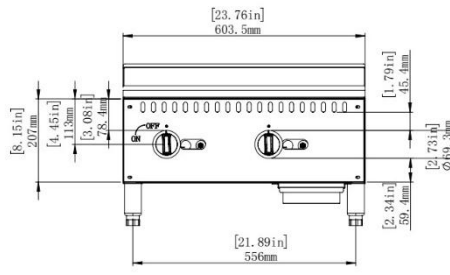
GAS GRIDDLES



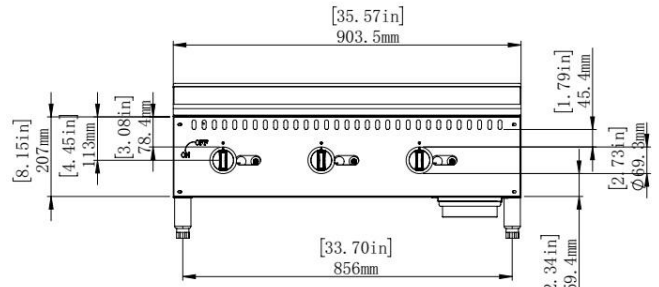
NMG48



NMG18



NMG24



NMG36

	NMG18	NMG24	NMG36	NMG48
BTU	30,000	60,000	90,000	120,000
# of Burners	1	2	3	4
Griddle Plate	1.6 cm (5/8 in) Thick Steel	1.6 cm (5/8 in) Thick Steel	1.6 cm (5/8 in) Thick Steel	1.9 cm (3/4 in) Thick Steel
Cooking Surface Size	45.2 x 48.2 cm 17.8 x 19 in	59.9 x 48.2 cm 23.6 x 19 in	89.9 x 48.2 cm 35.4 x 19 in	119.9 x 48.2 cm 47.2 x 19 in
Temperature Control	Manual			
Ignition	Standing Pilot			
Backsplash	Welded Stainless Steel, 7.6 cm (3 in) High			
Removable Drip Trays	Yes, Stainless Steel			
Grease Trough	Yes, 7.6 cm (3 in) Wide			
Legs	Adjustable 10 - 12.7 cm (4 to 5 in) Stainless Steel			
Unit Dimensions (W x D x H)	45.5 x 63.8 x 40.3 cm 17.9 x 25.1 x 15.9 in	60.4 x 63.8 x 40.3 cm 23.8 x 25.1 x 15.9 in	90.3 x 63.8 x 40.3 cm 35.6 x 25.1 x 15.9 in	120.3 x 63.8 x 40.3 cm 47.4 x 25.1 x 15.9 in
Unit Weight	45.8 kg (100.1 lb)	58.3 kg (128.5 lb)	76.5 kg (168.7 lb)	128.2 kg (282.7 lb)
Shipping Dimensions (W x D x H)	49.5 x 70.5 x 36 cm 19.5 x 27.8 x 14.2 in	64 x 70.5 x 36 cm 25.2 x 27.8 x 14.2 in	94 x 70.5 x 36 cm 37 x 27.8 x 14.2 in	124 x 70.5 x 36 cm 48.8 x 27.8 x 14.2 in
Shipping Weight	58.9 kg (129.8 lb)	72.9 kg (160.6 lb)	98.8 kg (217.8 lb)	154.7 kg (341 lb)

Includes

(4) adjustable legs, (1) gas conversion kit